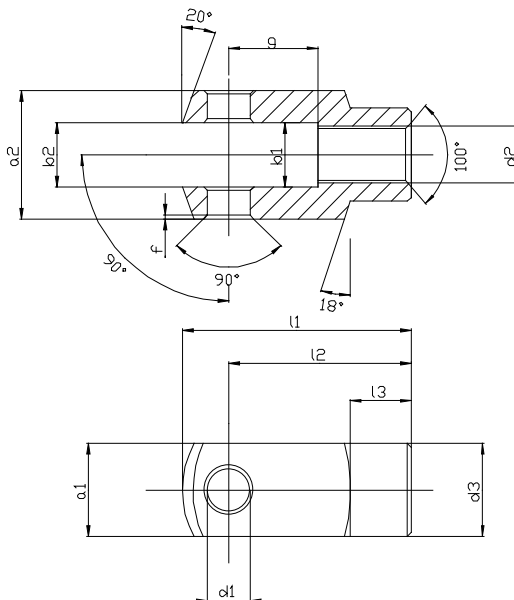
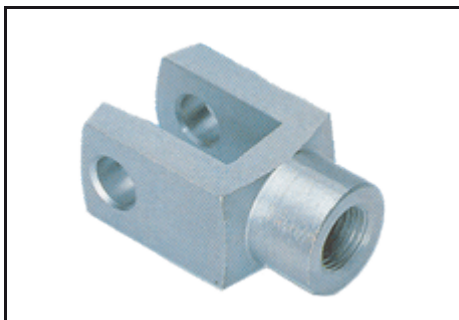


Gaffels volgens CNOMO 06 07 14

materiaal: staal 9S Mn Pb 28 R 50 daN/mm²

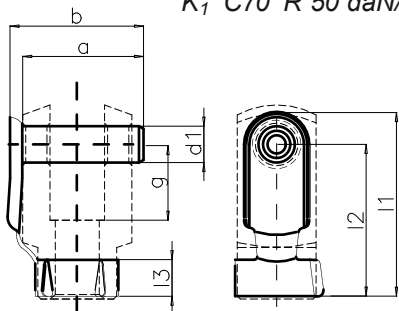


| Cilinder boring | Bestelnr. | d2 | d3 | l2 | b2 | d1 | a2 | a1 | g | l1 | l3 |
|-----------------|---------------|---------|----|-----|----|----|----|----|----|-----|------|
| 32 | GN M10 | M10x1,5 | 22 | 36 | 11 | 8 | 22 | 22 | 16 | 45 | 14 |
| 40 / 50 | GN M16 | M16x1,5 | 36 | 51 | 18 | 12 | 36 | 26 | 25 | 64 | 17 |
| 63 / 80 | GN M20 | M20x1,5 | 45 | 63 | 22 | 16 | 45 | 34 | 33 | 80 | 18,5 |
| 100 / 125 | GN M27 | M27x2 | 63 | 85 | 30 | 20 | 63 | 42 | 40 | 105 | 30 |
| 160 / 200 | GN M36 | M36x2 | 80 | 115 | 40 | 25 | 80 | 50 | 40 | 140 | 45 |

Pennen met borgclip volgens CNOMO 06 07 14

materiaal: staal K 9S Mn Pb 28 R 50 daN/mm²

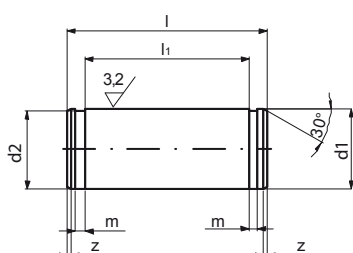
K₁ C70 R 50 daN/mm²



| Bestelnr. | voor gaffel GN ... | d ₁ | g | b | a | l ₁ | l ₂ | l ₃ |
|-----------------|--------------------|----------------|----|----|----|----------------|----------------|----------------|
| PCN08x16 | M10 | 8 | 16 | 28 | 25 | 41 | 36 | 10 |
| PCN12x25 | M16 | 12 | 25 | 44 | 40 | 60 | 50 | 12 |
| PCN16x33 | M20 | 16 | 33 | 53 | 49 | 74 | 63 | 15 |
| PCN20x40 | M27 | 20 | 40 | 73 | 69 | 98 | 81 | 19 |

Pennen compleet met borgveren volgens CNOMO 06 07 14

materiaal: staal 9S Mn Pb 28 R 50 daN/mm²



| Bestelnummer pen + borgveren | voor gaffel GN ... | d ₁ | l | d ₂ | l ₁ | z | m |
|------------------------------|--------------------|----------------|----|----------------|----------------|---|-----|
| PN08x30 + PA08 | M10 | 8 | 30 | 7,6 | 22 | 1 | 0,9 |
| PN12x45 + PA12 | M16 | 12 | 45 | 11,5 | 36 | 1 | 1,1 |
| PN16x55 + PA16 | M20 | 16 | 55 | 15,2 | 45 | 1 | 1,1 |
| PN20x75 + PA20 | M27 | 20 | 75 | 19 | 63 | 1 | 1,3 |
| PN25x95 + PA25 | M36 | 25 | 95 | 23,9 | 80 | 1 | 1,3 |